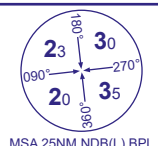
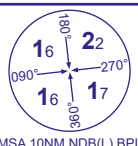


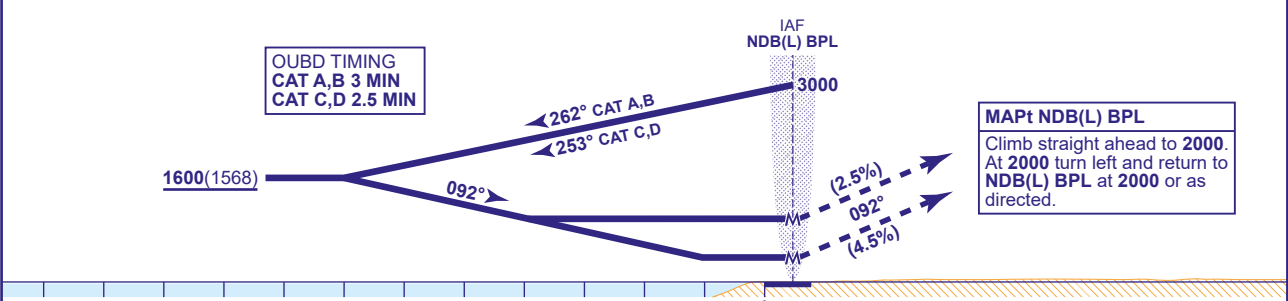
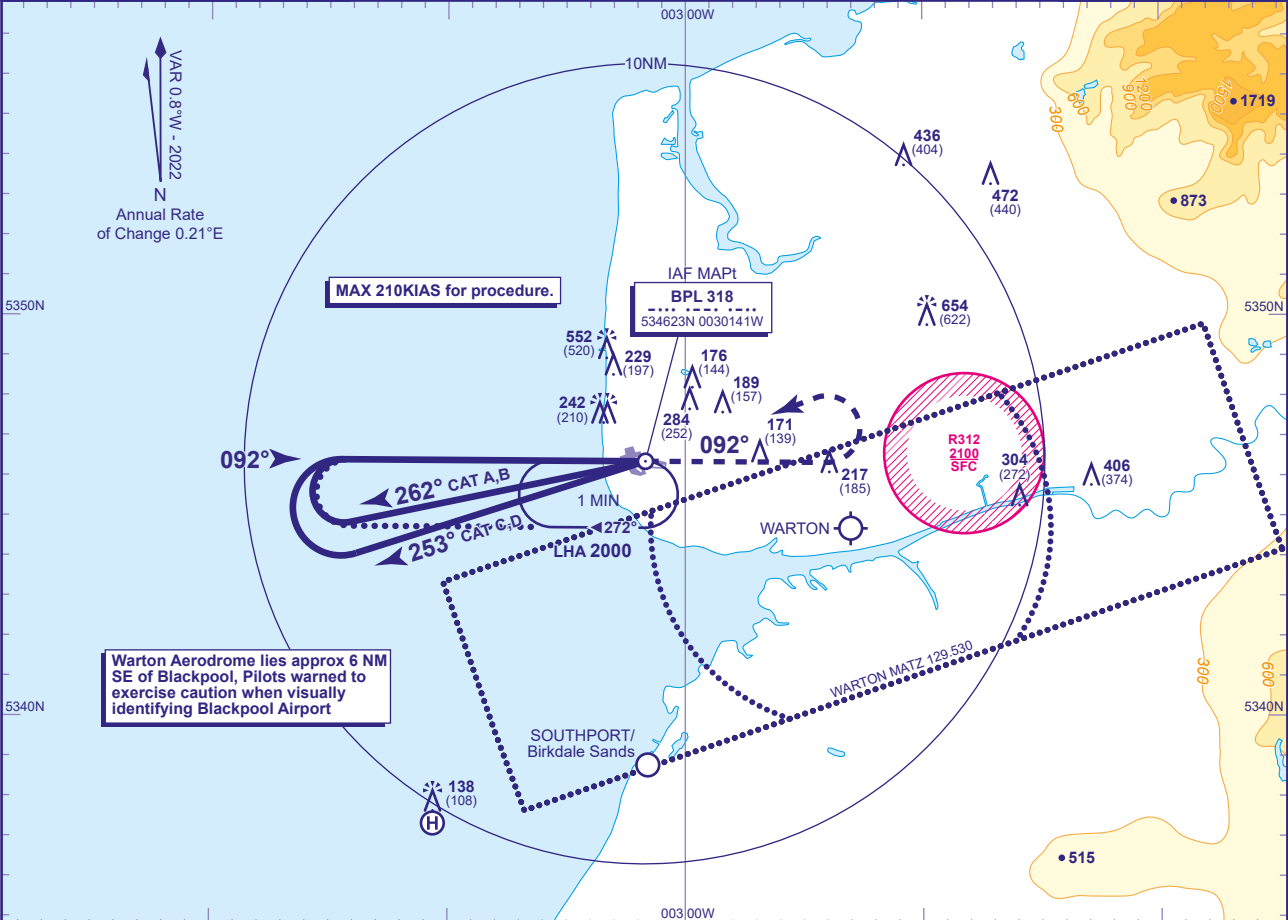
INSTRUMENT APPROACH CHART - ICAO

BLACKPOOL
NDB(L)
RWY 10
(ACFT CAT A,B,C,D)



APP	119.955	BLACKPOOL APPROACH	AD ELEVATION	34
TWR	119.955	BLACKPOOL TOWER	THR ELEVATION	32
ATIS	127.205	BLACKPOOL INFORMATION	OBSTACLE ELEVATION	654 AMSL (622) (ABOVE THR)
			BEARINGS ARE MAGNETIC	

TRANSITION ALTITUDE	3000
---------------------	------



Aircraft Category	A	B	C	D	Rate of descent	CAT A,B	G/S KT	120	100	80	
OCA(OCH) Climb Gradients	4.5%	450(418)	450(418)	450(418)			FT/MIN	510	510	510	
	3.5%	700(668)	700(668)	700(668)			G/S KT	180	160	140	
	3.0%	850(818)	850(818)	850(818)			FT/MIN	610	610	610	
VM(C)OCA (OCH AAL)	2.5%	1000(968)	1000(968)	1000(968)		CAT C,D	G/S KT	180	160	140	120
							FT/MIN	610	610	610	610
	Total Area	580(546)	830(796)	930(896)							
	South of RWY 10/28	N/A	N/A	N/A							

ALTERNATIVE PROCEDURE EXTENDED HOLDING PATTERN
From the NDB(L) BPL holding pattern at 3000 extend the outbound leg to 3 MIN (CAT A,B); 2.5 MIN (CAT C,D), descending to not below 1600(1568). Turn right, continuing decent as required, to establish on the extended FAT. When established continue as for main procedure.

NOTE 1 FAT offset 3.6° south of RWY C/L.
2 Lowest altitude to commence procedure from holding or missed approach is 2000.
3 Aircraft not permitted below 1670 over EGR312 for the purpose of landing at Blackpool.

CHANGE (3/24): VM(C)OCA(OCH AAL) SOUTH OF RWY 10/28.